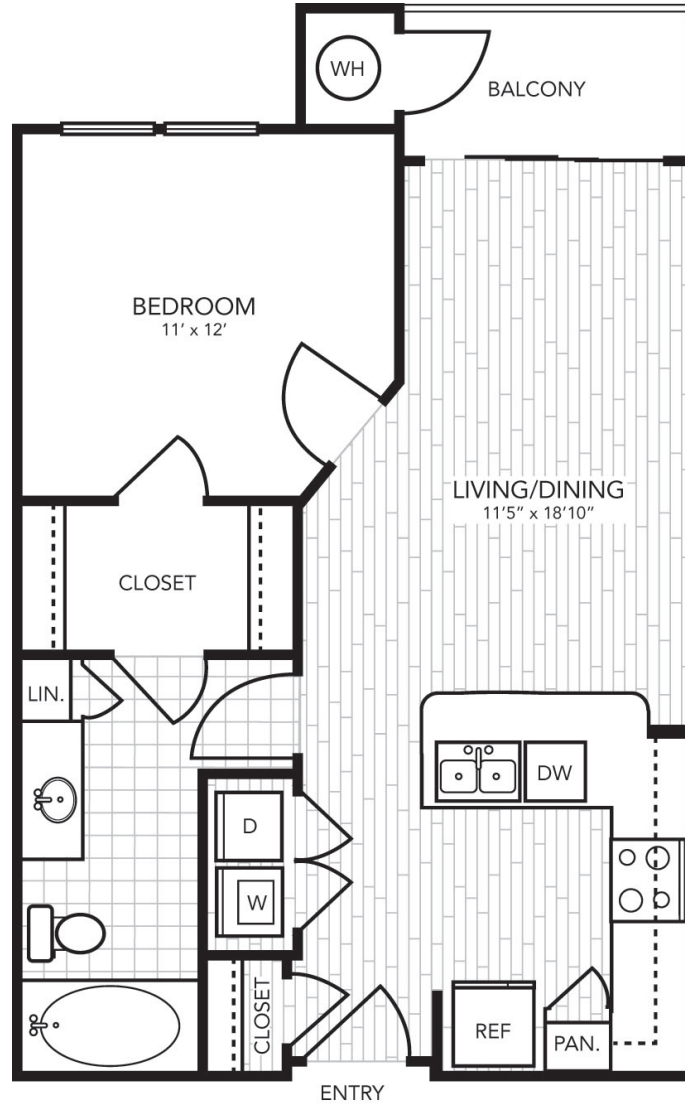


A0

655

1 BED / 1 BATH

SQ. FT.



10200 Six Pines Drive | The Woodlands, TX 77380

www.themillenniumsixpines.com

Floor plans are artist's rendering. All dimensions are approximate. Actual product and specifications may vary in dimension or detail. Not all features are available in every apartment home. Prices and availability are subject to change. Rent is based on monthly frequency. Additional fees may apply, such as but not limited to package delivery, trash, water, amenities, etc. Please see a representative for details.